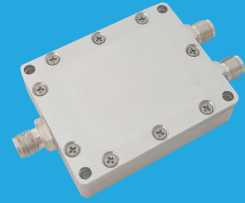


## QPD2-600-6000

### 2-Way, 0.6~6GHz

Features:  
 \* Small Size  
 \* Low Insertion Loss

Applications:  
 \* Amplifiers  
 \* Mixers  
 \* Antennas  
 \* Laboratory Test



### Electrical

Frequency:	0.6~6GHz
Insertion Loss:	1.0dB max.
Input VSWR:	1.25 max.
Output VSWR:	1.2 max.
Isolation:	20dB min.
Amplitude Balance:	±0.2dB
Phase Balance:	±2° (SMA) ±3° (N)
Impedance:	50Ω
Average Power:	30W max. 2W max. as combiner

### Mechanical

Mounting:	4-Φ2.8mm through-hole (SMA) 4-Φ3.4mm through-hole (N)
-----------	--

### Environmental

Operation Temperature: -35~+75°C

### How To Order

QPD2-600-6000-X-Y

X: Average power as divider

Y: Connector type

Connector naming rules:

S - SMA Female (Outline A)

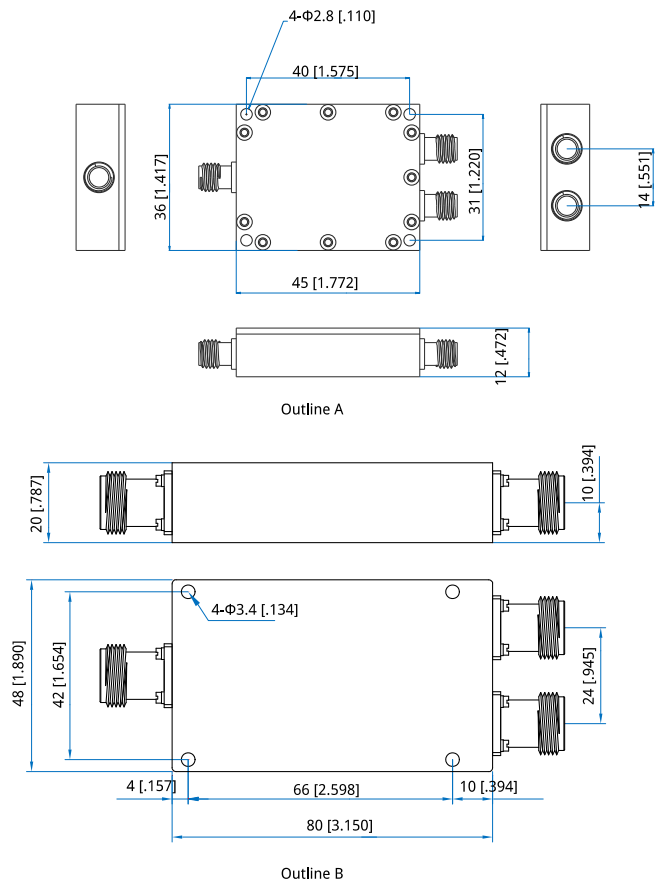
N - N Female (Outline B)

Examples:

To order a 2-way power divider, 0.6~6GHz, 30W, N female, specify QPD2-600-6000-30-N.

Customization is available upon request.

### Outline Drawings



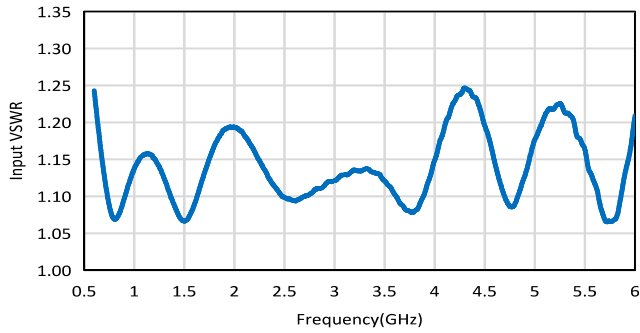
Unit: mm [in]

Tolerance: ±0.5mm [±0.02in]

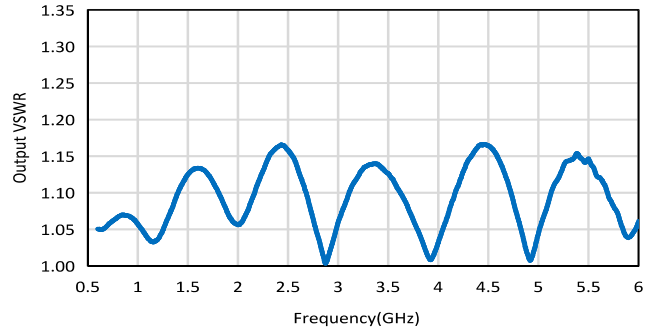
### Typical Performance Curves

#### SMA

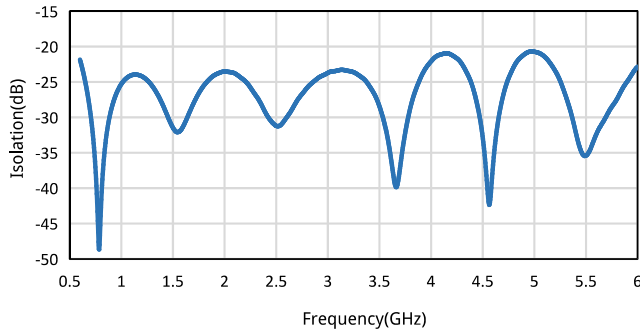
Input VSWR vs. Frequency



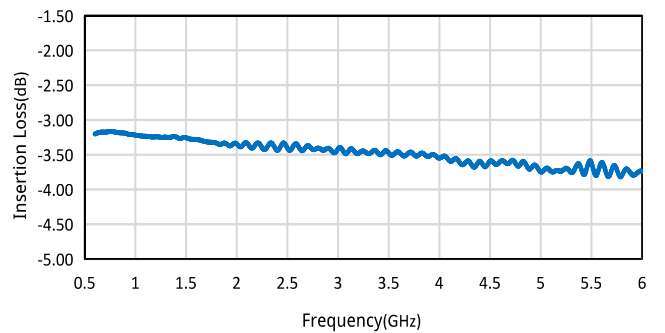
Output VSWR vs. Frequency



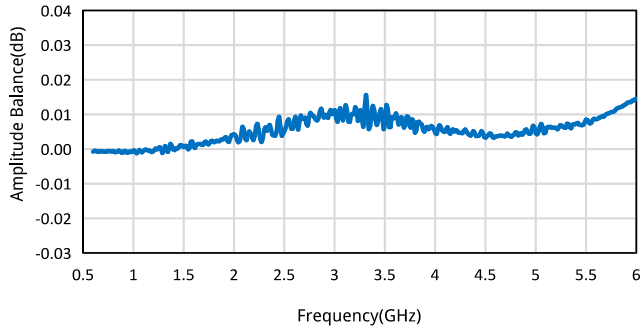
Isolation vs. Frequency



Insertion Loss vs. Frequency



Amplitude Balance vs. Frequency



Phase Balance vs. Frequency

